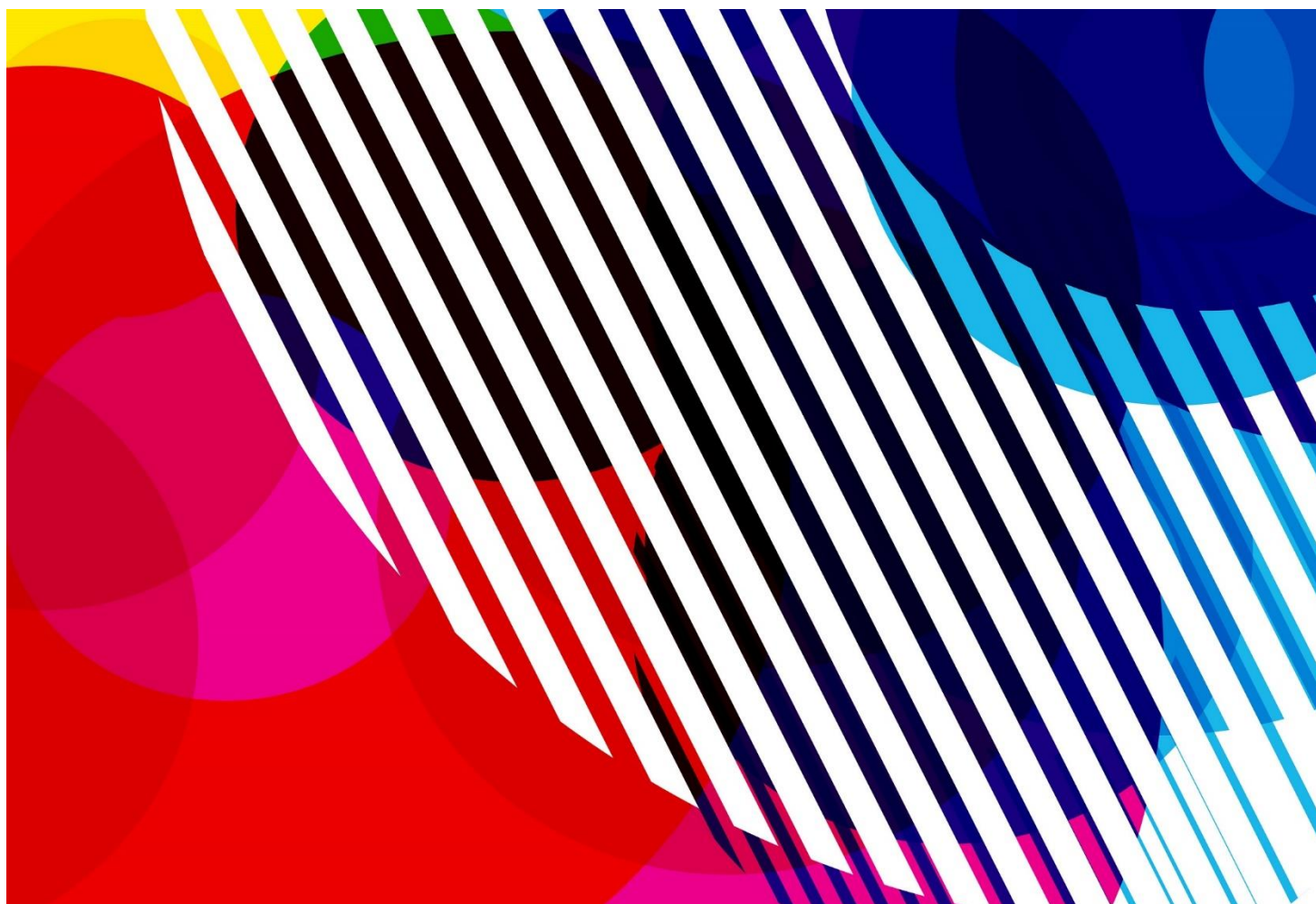


IWF

INTERNATIONAL
WEIGHTLIFTING
FEDERATION

TECHNICAL
OFFICIALS
EXAMINATION
2017- ANSWERS



IWF TECHNICAL OFFICIALS' EXAMINATION

2017 – ANSWERS

Q.1	b	Q.2	False	Q.3	c
Q.4	False	Q.5	b	Q.6	b
Q.7	b				
Q.8	15 (Senior World Championships)				
	15 (Junior World Championships)				
	13 (Youth World Championships)				
Q.9	b	Q.10	c		
Q.11	Junior / Senior	56	62	69	77
		85	94	105	+105
	Youth	50	56	62	69
		77	85	94	+94
Q.12	Junior / Senior	48	53	58	63
		69	75	90	+90
	Youth	44	48	53	58
		63	69	75	+75
Q.13	c	Q.14	True	Q.15	b
Q.16	c	Q.17	c	Q.18	a
Q.19	a	Q.20	False	Q.21	a
Q.22	b	Q.23	a	Q.24	a
Q.25	False				
Q.26	400 (Width)	400 (Length)		10 (Height)	
Q.27	20 (Men's bar)	15 (Women's bar)		2.5 (1 Collar)	
Q.28	c	Q.29	a		
Q.30	Red (25kg)	Blue (20kg)		Yellow (15kg)	
	Green (10kg)	White (5kg)		Red (2.5kg)	
	Blue (2kg)	Yellow (1.5kg)		Green (1kg)	
	White (0.5kg)				
Q.31	c	Q.32	b	Q.33	c
Q.34	True	Q.35	a	Q.36	c
Q.37	b	Q.38	b	Q.39	b
Q.40	a	Q.41	b	Q.42	True
Q.43	b	Q.44	b	Q.45	a
Q.46	False	Q.47	c	Q.48	a
Q.49	a	Q.50	b	Q.51	a
Q.52	b	Q.53	False	Q.54	a

Q.55	c	Q.56	a	Q.57	a
Q.58	a	Q.59	a	Q.60	b
Q.61	b	Q.62	b	Q.63	c
Q.64	b	Q.65	b	Q.66	c
Q.67	b	Q.68	a	Q.69	a
Q.70	b	Q.71	b	Q.72	False
Q.73	Technical Controller			Q.74	c
Q.75	c	Q.76	Jury	Q.77	b
Q.78	a	Q.79	a	Q.80	a
Q.81	c	Q.82	c	Q.83	c
Q.84	b	Q.85	Technical Controller		
Q.86	c	Q.87	c	Q.88	a
Q.89	False	Q.90	b	Q.91	False
Q.92	b	Q.93	b	Q.94	a
Q.95	c	Q.96	c	Q.97	b
Q.98	a	Q.99	See below		
Q.100	(S) See Below		(C&J) See below		
	(T) See below				

- **Q.8, Q.26, Q.27, Q.30, Q.100:** 2 points for a complete answer, 1 point for 1 mistake, 0 point for 2 mistakes or more.
- **Q.11, Q.12, Q.99:** 4 points for a complete answer, 3 points for 1 mistake, 2 points for 2 mistakes, 1 point for 3 mistakes, 0 point for 4 mistakes or more.
- **Other questions:** 1 point for each question.

$$\text{Your percentage} = (\text{your points} / 114) * 100$$

Answers for optional questions (Q.99 and Q.100)

Protocol 1

Previous World Records: S: 137, J: 172, T: 308

B Group Competition 12:00

Lot	Name	Snatch			C&J			Best					
		1	2	3	1	2	3	S	Place	C&J	Place	Total	Place
5	A	134	140	X 142	160	164	X 167	140	3	164	6	304	6
44	B	130	135	138	165	173	X 175	138	5	173	2	311	3
99	C	140	X 142	X 142	165	171	X 173	140	2	171	3	311	1

A Group Competition 18:00

Lot	Name	Snatch			C&J			Best					
		1	2	3	1	2	3	S	Place	C&J	Place	Total	Place
1	D	134	137	140	X 165	165	X 166	140	4	165	5	305	5
40	E	140	X 142	X 142	165	X 173	X 173	140	1	165	4	305	4
42	F	130	136	138	165	173	X 175	138	6	173	1	311	2

New World Record Holders: (S) C, (C&J) B, (T) C

Protocol 2

Previous World Records: S: 98, J: 119, T: 217

B Group Competition 12:00

Lot	Name	Snatch			C&J			Best					
		1	2	3	1	2	3	S	Place	C&J	Place	Total	Place
5	A	97	100	X 101	X 118	118	120	100	2	120	2	220	2
44	B	X 98	98	X 100	X 115	115	X 120	98	5	115	6	213	6
99	C	95	98	100	118	X 120	120	100	3	120	3	220	3

A Group Competition 18:00

Lot	Name	Snatch			C&J			Best					
		1	2	3	1	2	3	S	Place	C&J	Place	Total	Place
1	D	96	98	100	115	120	X 122	100	4	120	1	220	1
40	E	96	100	X 102	115	X 120	X 120	100	1	115	4	215	4
42	F	93	96	98	X 115	115	X 120	98	6	115	5	213	5

New World Record Holders: (S) A, (C&J) A, (T) A

Protocol 3

Previous World Records: S: 130, J: 159, T: 286

B Group Competition 12:00

Lot	Name	Snatch			C&J			Best					
		1	2	3	1	2	3	S	Place	C&J	Place	Total	Place
5	A	126	128	130	155	159	161	130	5	161	3	291	5
44	B	128	130	X 131	158	161	X 162	130	4	161	2	291	4
99	C	128	X 131	131	154	157	160	131	3	160	5	291	3

A Group Competition 18:00

Lot	Name	Snatch			C&J			Best					
		1	2	3	1	2	3	S	Place	C&J	Place	Total	Place
1	D	128	131	X 132	158	161	X 162	131	1	161	1	292	1
40	E	126	X 130	130	155	157	160	130	6	160	6	290	6
42	F	128	131	X 132	X 160	160	X 162	131	2	160	4	291	2

New World Record Holders: (S) C, (C&J) B, (T) D

The logo for the International Weightlifting Federation (IWF) is centered on the page. It features a stylized circular emblem above the letters 'IWF' in a large, bold, sans-serif font.